

▶ Architecture Design

SERVICES BRIEF

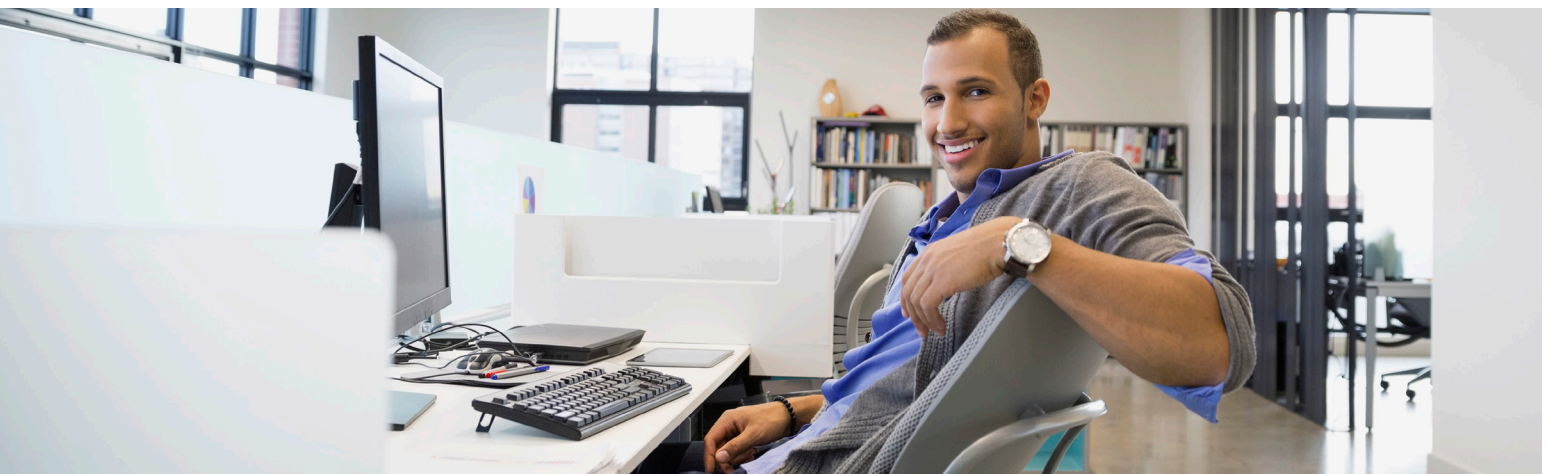
▶ HIGHLIGHTS

- 1 A comprehensive approach to data management design.
- 2 Clearly defined backup, recovery and archive configurations that support business and technical goals.
- 3 Confidence that the data and information management environment will meet current needs while having flexibility for growth and improvement.

▶ OFFERING SUMMARY

Global enterprises have for years, faced substantial data growth, limited IT budgets and a steady stream of challenges and complexities brought on by changes inside the data center. A slew of new technologies and regulatory requirements is wreaking havoc on already strained IT operations that simply don't have the proper management tools to support them.

The data and information management environments of most enterprises are in need of a significant overall. Companies need new, modern approaches to data & information management that will help them cost-efficiently manage data across its lifecycle, improve recovery times, reduce complexity and storage related costs, all while improving the operational capacity of their staff. Commvault helps its clients meet those needs by working closely with them during facilitated workshop sessions to create design and implementation plans for modernizing their data and information management environment.



- ▶ Working closely with your backup, recovery and archive teams, Commvault can help you develop a practical, modern vision for your IT environment.

During the sessions with client stakeholders, Commvault professionals assess their legacy approaches to backup and recovery, their archive and records retention strategies, and how these both tie to important business requirements. Then, Commvault consultants use these inputs as a foundation for executive level advice that will transform client's traditional operations into standards for data and information management. Finally, clients can choose to extend their design engagement into delivery and implementation activities. Here they leverage the experience of hundreds of trusted Commvault Services professionals to achieve that standard quickly and cost effectively.

Commvault's comprehensive, customer-centric approach to designing modern data and information management environments brings confidence to clients because their unique business requirements have been incorporated from the beginning. When data must be recovered quickly and cost effectively, our clients can be assured that any underlying Commvault® data management environment has been designed in strict alignment with corporate goals.

▶ ARCHITECTURE DESIGN

Commvault Consulting Services is the linchpin for transforming your traditional backup and archive strategy into a truly modern data and information management solution. Commvault employs standard methodologies, best practices, and the in-depth expertise of a dedicated team of consultants, architects, engineers, and industry experts to deliver its Architecture Design offering.

Commvault consultants work closely with the client's IT leaders to discover the current state of their backup and archive environment, create a vision for modern, yet pragmatic capabilities, develop design alternatives, make recommendations for optimal strategies, and propose architectures and configurations that meet those needs. Highlights of an Architecture Design engagement include:

Current State Assessment – Assess the existing architecture, comprehend service level challenges in context of long-term requirements, and develop a baseline for a modern architecture.

Architecture Planning – Design and plan for a centralized data and information management solution which covers key business and technical requirements for all data types including test, development, and production.

Infrastructure Planning – Create a detailed hardware, software, and facilities requirements document for procurement and planning purposes.

Standardized Policy Configuration – Develop detailed Commvault software policies for resources ranging from backup clients, to storage targets, schedules and data retention in the proposed architecture.

TECHNOLOGY CONSULTING

Our experts can design, install, configure, personalize and validate your Commvault environment so you achieve a better return on investment, faster and with more confidence.

VISIT NOW



bit.ly/1JweNGY

▶ **KEY SERVICE COMPONENTS AND BENEFITS**

COMPONENT	BENEFITS
Transformation	Commvault understands that change can be intimidating for an organization overwhelmed by today's IT landscape. Our seasoned consultants help clients overcome both technical and organizational challenges to achieve the transformation vital for maintaining a competitive market position.
Standard Delivery Approach	Commvault technology consultants and the knowledge base supporting them leverage years of industry experience helping thousands of unique data protection and archive customers. Their skill and expertise is incorporated into a facilitated workshop approach that dramatically reduces traditional design timelines.
Architecture Design	The Commvault Architecture Design offering includes input and direction from the customer's key stakeholders with responsibility for ensuring that critical backup/recovery, and archive functionality is designed as intended and the new solution is built with all areas of the business in mind.
Implementation Considerations	Key service level attributes of the design engagement are documented and can be implemented through the Commvault® software platform by Commvault's experienced engineers. Early consideration for implementation ensures that configurations requirements for the new environment are properly incorporated into the Commvault architecture and result in a reliable, cost effective implementation.
Optimized Environment	Commvault technology consultants work with the client to architect an optimized Commvault environment that includes customer driven business requirements for backup, recovery, archive and reporting.
Business Aligned Data & Information Management	Key business functions, regulatory requirements, and applications are identified along with respective needs for business resiliency. These requirements are the basis for building data and information management capabilities that are in-line with business value.

▶ To learn more about Commvault's consulting and professional services, visit commvault.com/services.

© 2015 Commvault Systems, Inc. All rights reserved. Commvault, Commvault and logo, the "CV" logo, Commvault Systems, Solving Forward, SIM, Singular Information Management, Simpana, Simpana OnePass, Commvault Galaxy, Unified Data Management, QiNetix, Quick Recovery, QR, CommNet, GridStor, Vault Tracker, InnerVault, QuickSnap, QSnap, Recovery Director, CommServe, CommCell, IntelliSnap, ROMS, Commvault Edge, and CommValue, are trademarks or registered trademarks of Commvault Systems, Inc. All other third party brands, products, service names, trademarks, or registered service marks are the property of and used to identify the products or services of their respective owners. All specifications are subject to change without notice.



▶ **PROTECT. ACCESS. COMPLY. SHARE.**

COMMVAULT.COM | 888.746.3849 | GET-INFO@COMMVAULT.COM
 © 2015 COMMVAULT SYSTEMS, INC. ALL RIGHTS RESERVED.